



**North-South Segment 1, Tier 2 Environmental Impact
Statement and Design Concept Report (DCR),
US 60 to Arizona Farms Road (SR 505)**

ADOT Tracs # 999 PN 000 F0491

Public Involvement Plan

August 2023

Prepared by HDR Engineering, Inc.
Arizona Department of Transportation
Communications and Public Involvement
1655 W Jackson St., Phoenix, AZ 85007

HDR Engineering, Inc.
20 E. Thomas Rd., Suite 2500
Phoenix, AZ 85012

Table of Contents

Purpose of the Public Involvement Plan..... 3

Study Overview 3

Level of Public Involvement and Public Involvement Goals 6

Community and Stakeholder Assessment 9

Title VI and Limited English Proficiency Evaluation 15

Public Involvement Plan During the Study Phase 21

Public Involvement Tools and Tactics 22

Public Meeting and Hearing Notifications 25

Online Meeting and Hearing Website 28

Community Groups Coordination and Pop-up Events..... 28

Handouts..... 28

Stakeholder Database 28

Title VI and ADA Outreach 29

 Study Milestones..... 31

Responsibilities Matrix..... 35

Appendix 42

 LEP Four-Factor Analysis Worksheet 42

 Community Analysis Data 42

Pursuant to Title VI of the Civil Rights Act of 1964, the Americans with Disabilities Act (ADA) and other nondiscrimination laws and authorities, the Arizona Department of Transportation (ADOT) does not discriminate on the basis of race, color, national origin, sex, age, or disability. Persons that require a reasonable accommodation based on language or disability should contact **Kara Spinney** at **855.712.8530** or kspinney@azdot.gov. Requests should be made as early as possible to ensure the State has an opportunity to address the accommodation.

De acuerdo con el Título VI de la Ley de Derechos Civiles de 1964, la Ley de Estadounidenses con Discapacidades (ADA por sus siglas en inglés) y otras normas y leyes antidiscriminatorias, el Departamento de Transporte de Arizona (ADOT) no discrimina por motivos de raza, color, origen nacional, sexo, edad o discapacidad. Las personas que requieran asistencia (dentro de lo razonable) ya sea por el idioma o discapacidad deben ponerse en contacto con **Kara Spinney** al **855.712.8530** o por correo electrónico al kspinney@azdot.gov. Las solicitudes deben hacerse lo más antes posible para asegurar que el Estado tenga la oportunidad de hacer los arreglos necesarios.

Purpose of the Public Involvement Plan

This study Public Involvement Plan (PIP) has been developed to guide how the Arizona Department of Transportation (ADOT) will interact with the public and key study stakeholders for the North-South Segment 1, Tier 2 Environmental Impact Statement and Design Concept Report (DCR), US 60 to Arizona Farms Road (SR 505). This PIP addresses public involvement during the environmental study phase of the Segment 1 Study. This PIP was first created in 2023, prior to the first round of outreach during the scoping meetings. As such, it is a living document. Updates will be made at least once a year in response to changes in the study schedule, public input received, or other new information received by the study team.

Study Overview

In 2023, ADOT initiated a Tier 2 engineering and environmental study to narrow the Segment 1 Study from a 1,500-foot-wide corridor to a proposed 400-foot freeway alignment with identified interchange locations, and other design features. A Tier 2 EIS and DCR will be prepared as part of this process in accordance with the National Environmental Policy Act (NEPA) and other regulatory requirements. The Segment 1 Study is the 20-mile-long north segment of the 55-mile planned North-South Corridor. It extends from US 60 to Arizona Farms Road. A separate Tier 2 engineering and environmental study is underway for the Segment 2 Study, which is a 35-mile-long corridor that continues from Arizona Farms Road to I-10 near Eloy. This PIP is for work underway on the Segment 1 Study.

Study Purpose and Need

A continuous, access-controlled north-to-south transportation corridor would:

- Improve access to future activity centers
- Improve regional mobility
- Improve north-to-south connectivity
- Integrate the region's transportation network
- Address existing and future population and employment growth
- Provide an alternative to avoid congestion on Interstate 10 (I-10)

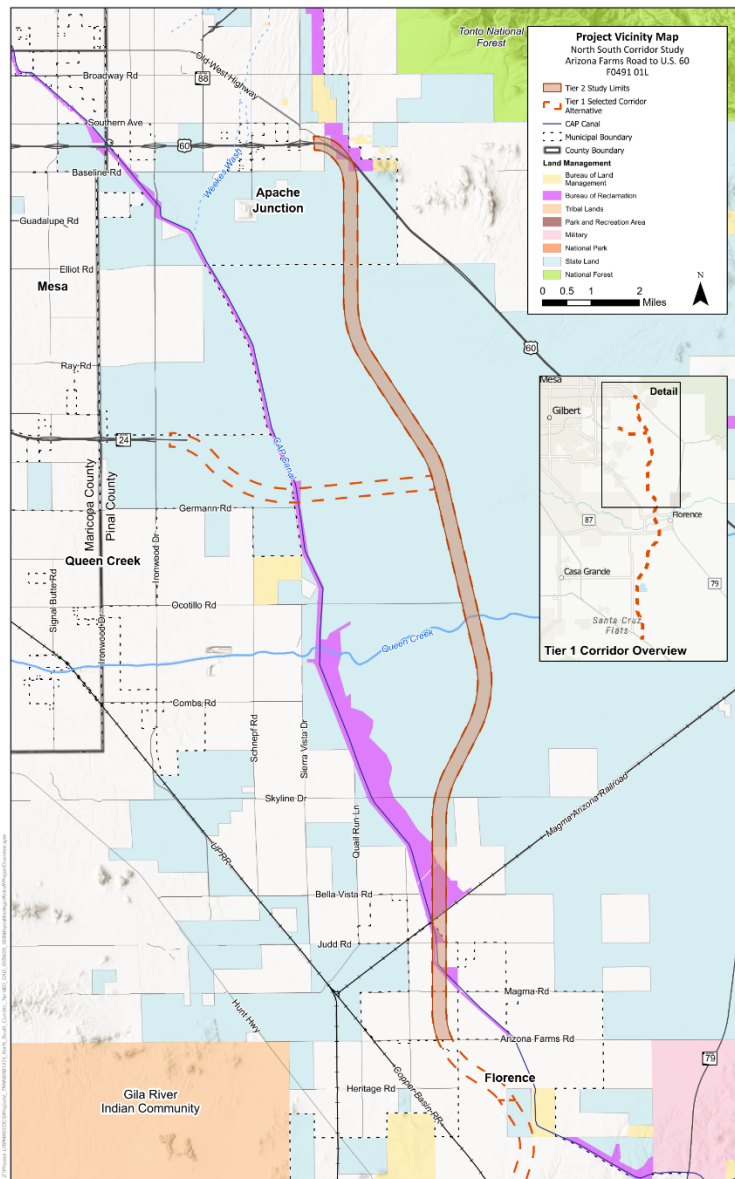
This Tier 2 study will further evaluate alternatives within the Segment 1 Study between US 60 and Arizona Farms Road. The purpose of the North-South Corridor was established during the Tier 1 study, and is to improve regional connectivity, provide an additional connection through a growing area of the Sun Corridor and address current and future transportation needs in Pinal County. As a part of this study, ADOT will refine the Tier 1 purpose and need to reflect updated conditions and needs specific to the Segment 1 Study.

Study Map

The Segment 1 Study is bounded on the north by US 60 near Apache Junction and continues south for approximately 20 miles to Arizona Farms Road in the south. See the study area map below in Figure 1.

Figure 1: Study Area Map





History and Background

In 2010, ADOT began [studying](#) a potential north-south corridor in Pinal County and released an initial scoping report in 2011. Following scoping, ADOT developed an [Alternatives Selection Report](#) that recommended several alternative 1,500-foot wide corridors for evaluation through a Tier 1 Environmental Impact Statement (EIS). In October 2016, the Federal Highway Administration (FHWA) and ADOT decided to transition the North-South Corridor to a combined Tier 1 EIS and Record of Decision (ROD) process to expedite the completion of the study.

During the Tier 1 EIS process, ADOT evaluated potential corridor alternatives, along with the no-build alternative, for a future project alignment for the 55-mile corridor between US 60 on the north to I-10 on the south, as well as a connection to State Route (SR) 24 at Ironwood Drive.

In September 2019, the Tier 1 Draft EIS (DEIS) and ROD was published and made available for public review and comment. The draft EIS and DCR identified the Recommended Build Alternative for the North-South Corridor. Three public hearings were held in the study area as part of the public involvement efforts.

The study team considered all comments received on the Tier 1 DEIS, conducted additional analysis, and coordinated with stakeholders to prepare the Final Tier 1 EIS and ROD. All comments received on the DEIS were considered and responded to in the Final Tier 1 EIS document.

On August 20, 2021, ADOT published the [Tier 1 EIS and ROD](#) for the North-South Corridor (Final Tier 1 EIS and ROD), which identified the selected build alternative for the North-South corridor. The Tier 1 EIS and ROD is a combined document, and the public release of the documents concluded the Tier 1 study. Since this was a combined EIS and ROD, there was no formal comment period.

The Final Tier 1 EIS, conducted in accordance with NEPA, incorporated changes based on comments received on the Draft Tier 1 EIS, as well as updated analyses based on new information, and identified a Selected Corridor Alternative for the proposed North-South Corridor. The Final Tier 1 EIS also provided a Draft Phased Implementation Plan, which is a conceptual framework for how the North-South Corridor will move forward into Tier 2 studies, the Segment 1 Study and the Segment 2 Study. The Phased Implementation Plan included smaller segments of a corridor alternative that would advance as separate, independent projects as seen with the segmented approach for this Tier 2 study.

In 2023, ADOT initiated Tier 2 engineering and environmental studies to refine the North-South Corridor from a 1,500-foot-wide corridor to a proposed 400-foot-wide freeway alignment, and to identify the location of interchanges and other design features. ADOT hosted a series of public meetings for the Segment 1 Study in fall 2023. Some stakeholders with properties in the Segment 2 Study attended the meetings, due to the proximity of their properties to the Segment 1 Study.

Level of Public Involvement and Public Involvement Goals

ADOT follows the [International Association for Public Participation IAP2 Spectrum for Public Participation](#) to identify the anticipated level of public involvement for each phase of a project and study. ADOT's overall public participation goal for this study is to inform and consult the public and key stakeholders regarding the proposed study. All public outreach efforts will be coordinated and aligned with the Segment 2 Study Public Involvement Phases. Extensive communication and ongoing coordination meetings with the Segment 2 Study Team will occur to ensure cohesive planning of public meetings, outreach tactics, comment periods, and stakeholder engagement between North-South Segments 1 and 2.

Specific objectives for these goals are:

INFORM

Objective 1: Develop a public understanding of the study with emphasis on the purpose and scope of the study, alternative alignments and interchange concepts being considered and opportunities to provide input.

- Evaluate existing Tier 1 collateral materials and develop new study branding and messaging that both links to the Tier 1 study but differentiates the Segment 1 Study.
- Educate the public on the purpose, scope, timing and outcomes of the Segment 2 Study through messaging and clear, yet simple collateral materials.
- Inform the public about study progress and opportunities to provide input, with emphasis on seeking input on the project scope, alternatives and potential impacts.
- Ensure that property owners and others who are directly impacted by the proposed corridor alternatives are informed of the study, alternatives being considered, opportunities to provide input and project decisions.
- Communicate public involvement activities and study developments and milestones through distribution of public information materials (print and online) and maintenance of multiple sources of information through tools such as the study website, online meeting tool and social media.

CONSULT

Objective 1: Provide opportunities for public, agency, and local government participation in the decision-making process, and consider public and agency input in the development, refinement and selection of project alternatives.

- Offer multiple formal public, agency and stakeholder involvement opportunities at major study milestones, both in person and virtually, through public meetings and hearings and stakeholder and agency briefings to provide opportunities for formal public comment.
- Seek opportunities to engage with affected and interested stakeholders throughout the study process, including outside of formal comment periods.
- Establish multiple methods of commenting to meet the needs of diverse groups with the public and/or agencies and stakeholders, including but not limited to email, phone, mail, verbal comments at formal public meetings and hearings, surveys, comment forms, and online comment maps.
- Solicit feedback through multiple communication channels (both print and online) such as emails, comment cards, surveys, question cards, newsletters, and/or informal discussions and meetings with stakeholders.

Objective 2: Maintain accountability, credibility, and accessibility of the study team.

- Implement a documentation and response process to include “action taken” feedback on specific comments received from the public.

- Create an online stakeholder management system to efficiently document all public, agency, or stakeholder communications and provide monthly monitoring and reporting on these communications.
- Provide regular opportunities for information exchange with agency representatives, stakeholder groups, and others interested in the study.
- Provide a contact email and phone number for the Segment 1 Study team to respond to inquiries throughout the study.

Objective 3: Engage the public.

- Periodically evaluate the effectiveness of engagement tactics to determine the most effective ways to communicate information (e.g., public meeting, website, social media, exhibits, print and electronic media, news releases, study videos, etc.).
- Provide regular and convenient means of communication between the study team and the community.
- Encourage active participation at significant study milestones and include public input as part of the decision-making process.
- Offer and seek out multiple informal public involvement and engagement opportunities, in addition to public meetings, through formats such as pop-up or community event booths, community or business organization meetings, and/or community canvassing.
- Identify low-income, minority, indigenous, Limited English Proficiency (LEP), and disabled populations and strategies to provide meaningful engagement to these traditionally underserved populations. Establish community contacts to communicate effectively with these groups and individuals.
- Make reasonable efforts to seek input from a broad cross-section of the community in the study area, based on community demographics.
- Hold public information meetings and a public hearing, conduct required meeting and hearing notification and comment periods and include public comments and public involvement summaries in project documentation in accordance with federal guidance and the ADOT Public Involvement Plan.

The PIP for this study will adhere to the following guiding principles:

- All public information and involvement activities will occur in alignment with Title VI of the 1964 Civil Rights Act (Title VI), the ADA, Executive Order 13166 on LEP and the ADOT PIP.
- Reasonable access to technical and policy information is available to the public throughout the study.
- Demonstration of explicit consideration and response to public input obtained whenever possible. When substantive study-related concerns are submitted, additional analysis and reports may be necessary.
- Solicit and consider of the needs of traditionally underserved populations to ensure meaningful opportunities for their involvement in decision-making, to avoid or minimize adverse impacts

upon these populations. Traditionally underserved populations include, but are not limited to, low-income and minority populations, LEP persons, and individuals with disabilities.

- Periodic reviews of the effectiveness of the community relations and public involvement program to ensure that full and open access is being provided to all who are interested or who could be interested in the study. For Title VI and LEP purposes demographic data must be collected to determine the effectiveness and evidence of outreach, specifically outreach to those traditionally underserved communities.
- Coordination with local and regional government agencies and other stakeholders. ADOT recognizes the importance of collaborating with community leaders to assist with public involvement efforts.
- Provision of timely information to agencies and/or individuals, including those representing other local jurisdiction concerns.

Community and Stakeholder Assessment

A community and stakeholder assessment was conducted to determine the unique makeup of the community and help inform the overall public outreach strategy, as well as determine if translation and interpretation services would be needed.

Community Description

The study area is composed of primarily rural communities with portions of farmland throughout. The population in the area is older, with 40% being 60 years of age and over, and is primarily white with 25% minority populations. Within this population is a portion of Spanish-speaking individuals with LEP.

The study area is located near Florence in the south, San Tan Valley and Queen Creek in the west, Gold Canyon in the east, and Apache Junction in the north; and is located solely in Pinal County. The southern portion of the Segment 1 Study includes several small, condensed housing communities (Magma Ranch) as well as a solar farm, while the northern portion of the Segment 1 Study connects to US 60 and several large housing developments and retirement communities such as Gold Canyon (a full list of communities can be found below).

Known or Anticipated Issues

Below are several known and/or anticipated issues for the study based on previous study phases, agency, stakeholder, and community feedback, and other ongoing studies in the area.

Recent and ongoing studies. In addition to the Segment 2 Study, which is a year behind schedule compared to the Segment 1 Study, there are several recent and ongoing studies within or around the Segment 1 Study area. We anticipate possible confusion in differentiating the studies and their purposes and needs, schedules, lead agencies and elements of each of these other studies and projects. Studies and projects include:

- Pinal County:
 - Central Arizona Parkway
 - SR 24 Extension
- ADOT, AZ Passenger Rail Corridor Study Tier 1 EIS
- Phoenix-Tucson Intercity Passenger Rail Corridor Study
- Maricopa Association of Governments (MAG), Superstition Vistas Multimodal Transportation Planning Study

Major concerns include the confusion between this study and the Central Arizona Parkway study, which both follows a similar north-south alignment within the same area but is west of the CAP canal. ADOT has received comments from residents as part of the Long-Range Transportation Plan and Five-Year Program comment process expressing doubt over whether both the North-South Corridor and the Central Arizona Parkway are both needed.

Coordination and Consultation with Tribal Nations. The Tier 1 study identified substantial interest from several tribal nations (the full list is included in the stakeholder table below). Tribal coordination and consultation will be necessary to advance the study and ensure collaboration among the nations. Tribal coordination and consultation shall occur according to ADOT's established process.

Proposed and Planned Development. Inquiries from various developers or landowners that are considering or planning on developing current property they own or might be acquiring.

Arizona State Land Department (ASLD) land. ASLD owns most of the land impacted by the corridor. The Town of Queen Creek has annexed over 4,000 acres of ASLD land in the vicinity of SR 24 and the North-South corridor. ASLD lands within project area covers different municipal planning areas, planned developments, etc.

Utility and Railroad impacts and coordination. Several areas along the corridor cross and/or impact major utilities and/or railroads including:

- Magma Arizona Railroad
- Box Canyon Solar Farm power transmission lines
- Salt River Project (SRP) substations
- Central Arizona Project water canal
- Other major transmission lines throughout the area

Project Alignment: Tier 1 Corridor was selected based on extensive coordination with various entities, including the public, agencies, and tribal nations/government.

Noise impacts to Residential Properties. We anticipate that communities within and near the corridor will have an interest in minimizing noise impacts by shifting the corridor alignment further from their homes and/or providing noise walls. We anticipate that communities within and near the corridor will

have an interest in minimizing noise impacts by shifting the corridor alignment further from their homes and/or providing noise walls.

Stakeholders

Any person or group who could be affected by this study, or who perceives that their interests could be affected, is a stakeholder. Stakeholders include both external and internal. This is a list of external stakeholders for the study. The list will be updated as the study and public involvement activities progress.

Category	Stakeholders
<p>Residential areas within the study area</p>	<ul style="list-style-type: none"> • Apache East • Bonita Vista Resort • Brookhaven Estates • Campground USA • Canyon Vistas • Crestfield Manor II by Richmond American Homes • Countryside Resort • Desert Harbor • Desert Sun Condominiums • Dolce Vita • Dobson Ranch • Gold Canyon • Golden Vista Resort • Ironwood States at Tomahawk • Jacob’s Ranch • La Casa Blanca • La Hacienda RV Resort • Magma Ranch by Starlight Homes • Palmas Del Sol East • Quail Run Manufactured Housing Community • Raindance Mobile Park • Rancho Mirage • Saguaro Canyon Village • Sundance West RV Resort • Vista Hermosa
<p>Businesses and Large Employers</p>	<p>The area is made up of mostly farmland and more rural areas with limited major businesses. However, there are a few businesses that are either located in the area or that have shown interest in the study, those of which are listed below:</p> <ul style="list-style-type: none"> • Apache Creek Golf Club • Ashton Wood Homes • Pulte Group • Poseidon Solar • Queen Creek Olive Mill • Queen Creek Solar

Category	Stakeholders
	<ul style="list-style-type: none"> • Sun Solar, LLC • Schnepf Farms • Southwest Asphalt Queen Creek • Fisher Sand and Gravel • Resolution Copper (outside of the area but have shown interest in the study)
Large Event Venues	<ul style="list-style-type: none"> • Desert View Weddings & Events • Arizona Renaissance Festival Grounds
Large Retail Centers	<ul style="list-style-type: none"> • None
Hospitals and Large Medical Facilities	<ul style="list-style-type: none"> • Florence Hospital
Chamber of Commerce	<ul style="list-style-type: none"> • Pinal County Chamber of Commerce • Florence Chamber of Commerce • Queen Creek Chamber of Commerce • San Tan Valley Chamber of Commerce • Apache Junction Chamber of Commerce
Homeowners Associations	<ul style="list-style-type: none"> • Gold Canyon Golf Resort Vacation Villas Homeowners Association • Golden Vista RV Resort Homeowners Association • Vista Hermosa Homeowners Association
Large Places of Worship	<ul style="list-style-type: none"> • Chimayo Mission • Wat Samakki of Arizona • Mountain View Lutheran Church • Kingdom Hall Of Jehovah's Witnesses • St. Michael the Archangel Catholic Parish • Epic Christian Church • LifePoint Church • Queen Creek Apostolic Assembly Church • Crossroads Church • Gold Canyon United Methodist Church • Superstition Foothills Baptist • Centerstage Church • Gold Canyon Community Church • Sun Valley Community Church - East Mesa • The Church of Jesus Christ of Latter-day Saints • Love Gospel Church • Rock Church Apache Junction • Church of the Transfiguration • Generation Church - Mesa Campus • Grace City Christian Church • New Life Ministries • Hope Community Church
Museums and Cultural Centers	<ul style="list-style-type: none"> • None

Category	Stakeholders
Community Centers and Libraries	<ul style="list-style-type: none"> • Pinal County Library
Schools and Colleges	<ul style="list-style-type: none"> • Apache Junction Unified District • Central Arizona College • J.O. Combs Unified School District
Hotels and Resorts	<ul style="list-style-type: none"> • Best Western Apache Junction Inn • Best Western Gold Canyon Inn & Suites • Gold Canyon Golf Resort & Spa • Motel 6 Apache Junction, AZ • Residence Inn by Marriott Phoenix Mesa East
Local Municipalities, State and Federal Agencies	<ul style="list-style-type: none"> • Town of Florence • City of Casa Grande • City of Coolidge • City of Apache Junction • City of Eloy • City of Mesa • Flood Control District Maricopa County • Pinal County • U.S. Army Corps of Engineers • Arizona State Historic Preservation Office • San Carlos Irrigation and Drainage District • San Tan Irrigation District • Queen Creek Irrigation District • Queen Creek Irrigation Water Delivery District • ASLD • Arizona Game and Fish Department • U.S. Department of the Interior Fish and Wildlife Service • Maricopa County • Bureau of Land Management • Bureau of Reclamation • SRP • Central Arizona Project • Arizona Water Company
Transportation Organizations	<ul style="list-style-type: none"> • Phoenix-Mesa Gateway Airport Authority • MAG • Sun Corridor Metropolitan Planning Organization • Central Arizona Governments • Valley Metro • Coolidge Public Transit • Central Arizona Regional Transit
Advocacy and Environmental Groups	<ul style="list-style-type: none"> • East Valley Transportation Infrastructure (EVTI) Stakeholder Group • Queen Creek Suburban Ranches • Open Space and Trails - Pinal County

Category	Stakeholders
Public Safety	<ul style="list-style-type: none"> • Santan Shredders LLC • Arizona Department of Corrections • Arizona Department of Emergency and Military Affairs • Arizona Department of Public Safety • Rural Metro Fire Department • Pinal County Sherriff's Department
Federally Recognized Tribes	<ul style="list-style-type: none"> • Four Southern Tribes: <ul style="list-style-type: none"> ○ Ak-Chin Indian Community ○ Gila River Indian Community ○ Salt-River Pima Maricopa Indian Community ○ Tohono O'odham Nation • Bureau of Indian Affairs <p>Additionally, all other tribal nations are invited to participate, including each Tribal Historic Preservation Office:</p> <ul style="list-style-type: none"> • Chemehuevi Indian Tribe • Cocopah Indian Tribe • Colorado River Indian Tribes • Fort McDowell Yavapai Nation • Fort Mojave Indian Tribe • Fort Sill Apache Tribe • Fort Yuma- Quechan Tribe • Havasupai Tribe • Hopi Tribe • Hualapai Tribe • Kaibab Band of Paiute Indians • Mescalero Apache Tribe • Moapa Band of Paiute Indians • Navajo Nation • Las Vegas Tribe of Paiute Indians of the Las Vegas Indian Colony • Paiute Indian Tribe of Utah • Pascua Yaqui Tribe • Pueblo of Acoma • Pueblo of Zuni • San Carlos Apache Tribe • San Juan Southern Paiute • Tonto Apache Tribe • Ute Mountain Ute • White Mountain Apache Tribe • Yavapai Apache Nation

Anticipated Community Concerns

Listed below are community concerns based on outreach conducted during the Tier 1 Study:

- General alignment concerns for Town of Florence landowners in the southern portion of the Segment 1 Study
- General concern over Selected Alternative from the Tier 1 study (preference by some for a western alignment west of the canal)
- Lack of connection to the communities west of the corridor
- Access to Gold Canyon community, existing US 60 congestion, and safety concerns with residents expressing a desire for a US 60 bypass route to reduce traffic
- Property and right-of-way impacts along the corridor
- Environmental impacts along the corridor
- Lack of connectivity to existing SR 24
- Increased traffic congestion and noise
- Convenient community access to repository locations and public meeting locations (requesting more locations near condensed areas such as San Tan and Queen Creek)

Listed below are community concerns based on outreach conducted during the 2023 Scoping meetings for Tier 2:

- Changes and additions to the potential interchange locations proposed in the Tier 1 Study
- Overall location of and interest in the connection of the North-South corridor to US 60
- Concern with current and future traffic in the surrounding areas (both east and west of the 1,500-foot corridor)
- Concerns over right-of-way and properties near or within the corridor
- Interest in additional east-to-west interconnectivity
- Concerns over the environmental impacts of a potential new highway
- Overall support for the addition of the highway to relieve congestion
- Concerns over increased development in this area of Pinal County due to the potential highway
- Concerns over lack of funding for the project

Title VI and Limited English Proficiency Evaluation¹

Demographics of the affected study area were assessed using the US Census, 2021 American Community Survey (ACS) 5-Year Estimates Detailed Tables and median income from 2023 ASC data. The area evaluated included a 2-mile radius from the study limits in Pinal County from US 60 to Arizona Farms Road. Please see the Appendix for the LEP Four Factor Analysis Worksheet, Demographic Analysis Area Map used, and accompanying data documentation.

The total population (Table B01003) in the affected study area is based on tracts completely or partially within the two-mile buffer is 94,230.

¹ Full data sets for each category below can be found in the appendix.

LEP Four Factor Analysis

An LEP Four-Factor Analysis was completed (full details can be found near the end of the document) to measure and document LEP needs of the study area using the US Census and the 2021 ACS 5-Year Estimates Detailed Tables. The analysis indicated that 2,585 people, or 5% of the population in the study area, speak English less than very well.

Of those, the following LEP languages meet the Safe Harbor Threshold for translation of study documents (exceeding 1,000 people or 5% of the eligible affected population): Spanish (2,365 people or 4% of the population in the study area).

Based on this information, Spanish interpretation at the public meeting(s) and translation of critical study materials will be provided. Other language services will be provided upon request.

Minority Populations

The total minority population in the study area is 25,023 or 26.5% of the population. The population by race is as follows:

RACE/ETHNICITY	TOTAL	%	Pinal County %
White	69,207	73.4%	55.4%
Hispanic/Latino	18,392	19.5%	30.9%
Black or African American	1,834	1.95%	4.4%
Native American or Alaska Native	962	1.02%	3.9%
Asian	1,099	1.2%	1.4%
Native Hawaiian or Pacific Islander	73	0.08%	0.33%
Some other race/two or more races	2,663	2.8%	3.6%

This data indicates there is a low number of minority residents in the study area, as compared to the county average, which is 44.6% of the population.

The following tables indicate the block groups with a higher composition of minority residents for each race and ethnicity compared to the county average for each race.

Additional efforts will be made to ensure that impacted minority populations are informed of the study and opportunities to engage.

2021 Hispanic or Latino (ACS 5-Yr)		
Census Tract/Block Group	# of Total Population	Percentage of Total Population
Census Tract 2.08 – Block Group 2	996	45.94%

2021 Hispanic or Latino (ACS 5-Yr)		
Census Tract/Block Group	# of Total Population	Percentage of Total Population
Census Tract 2.12 – Block Group 1	605	31.94%
Census Tract 2.12 – Block Group 2	1,465	45.98%
Census Tract 2.17 – Block Group 1	1,277	47.10%
Census Tract 3.12 – Block Group 1	760	35.87%
Census Tract 3.12 – Block Group 2	84	36.36%
Census Tract 3.20 – Block Group 1	332	32.81%
Census Tract 3.25– Block Group 2	712	34.41%
Census Tract 8.04 – Block Group 1	557	59.13%
Census Tract 4226.53– Block Group 2	757	31.05%

2021 Race: Black (ACS 5-Yr)		
Census Tract/Block Group	# of Total Population	Percentage of Total Population
Census Tract 2.12 – Block Group 1	184	9.71%
Census Tract 3.13 – Block Group 2	41	4.80%
Census Tract 3.24 – Block Group 1	153	7.49%
Census Tract 3.24 – Block Group 2	193	13.85%
Census Tract 8.06 – Block Group 1	425	10.82%
Census Tract 8.06 – Block Group 2	240	7.67%
Census Tract 3.24 – Block Group 2	110	4.51%

2021 Race: American Indian or Alaskan Native (ACS 5-Yr)		
Census Tract/Block Group	# of Total Population	Percentage of Total Population
Census Tract 2.12 – Block Group 3	131	6.13%
Census Tract 3.09 – Block Group 1	92	4.68%
Census Tract 3.13 – Block Group 1	105	5.38%
Census Tract 8.05 – Block Group 1	171	10.22%
Census Tract 8.05 – Block Group 3	228	10.88%

2021 Race: Asian (ACS 5-Yr)		
Census Tract/Block Group	# of Total Population	Percentage of Total Population
Census Tract 2.08 – Block Group 1	78	6.31%
Census Tract 2.08 – Block Group 2	35	1.61%
Census Tract 2.12– Block Group 1	43	2.27%
Census Tract 3.09 – Block Group 1	86	8.29%
Census Tract 3.10 – Block Group 2	101	6.30%
Census Tract 3.12 – Block Group 3	110	6.59%
Census Tract 3.13 – Block Group 3	19	1.83%
Census Tract 3.16 – Block Group 2	21	1.72%
Census Tract 3.17 – Block Group 2	35	2.08%
Census Tract 3.22 – Block Group 2	45	3.78%

2021 Race: Native Hawaiian (ACS 5-Yr)		
Census Tract/Block Group	# of Total Population	Percentage of Total Population
Census Tract 2.17 – Block Group 1	44	1.62%
Census Tract 3.20 – Block Group 1	9	0.89%
Census Tract 8.05 – Block Group 3	20	0.95%

2021 Race: Other or Two or More (ACS 5-Yr)		
Census Tract/Block Group	# of Total Population	Percentage of Total Population
Census Tract 2.02 – Block Group 2	222	9.05%
Census Tract 2.08 – Block Group 2	109	5.03%
Census Tract 3.09 – Block Group 1	89	4.53%
Census Tract 3.12 – Block Group 3	67	4.01%
Census Tract 3.13 – Block Group 2	192	22.48%
Census Tract 3.15 – Block Group 2	231	15.75%
Census Tract 3.16 – Block Group 4	21	4.23%
Census Tract 3.17 – Block Group 2	143	8.49%
Census Tract 3.22 – Block Group 1	90	5.54%
Census Tract 3.22 – Block Group 2	113	9.50%
Census Tract 3.24 – Block Group 2	71	5.10%
Census Tract 3.25 – Block Group 2	78	3.77%
Census Tract 8.05 – Block Group 3	146	6.97%

Age

The age breakdown in the study area is as follows, with the largest age group being 65 to 69 [table export from Census table S0101].

Age	# of Total Population	Percentage Of Total Population
Under 5 years	4,295	5%
5 to 9 years	4,370	5%
10 to 14 years	4,528	5%
15 to 19 years	4,822	5%
20 to 24 years	3,984	4%
25 to 29 years	4,855	5%
30 to 34 years	4,045	4%
35 to 39 years	4,528	5%
40 to 44 years	4,896	5%
45 to 49 years	5,038	5%
50 to 54 years	4,672	5%
55 to 59 years	6,371	7%
60 to 64 years	7,718	8%
65 to 69 years	9,075	10%
70 to 74 years	8,085	9%

Age	# of Total Population	Percentage Of Total Population
75 to 79 years	6,673	7%
80 to 84 years	3,629	4%
85 years and over	2,646	3%

This data indicates that the population in the study area is older, with 32% of the population 65 years and over. Based on this information the team will provide hard copies of the presentation at the in-person meetings and hearings that can be available upon request.

Household Income

The median household income is \$61, 235, which is below the median household income of \$65,488 for Pinal County (2021). One of the block groups in the study area have median incomes at or below the United States Department of Housing and Urban Development poverty level of \$32,150 for a family of four.

Low Income

Within the study area, 9.81% of the population is considered low-income based on the poverty status which is defined by the US Census Bureau. This is lower than the Pinal County average, which is 11.4%.

Additional efforts will be made to ensure that impacted low-income populations are informed of the study and opportunities to engage.

Geography	Median Income	Income Below Poverty Level
Census Tract 2.01	\$72,602	No
Block Group 1	\$74,107	No
Block Group 2	\$69,276	No
Census Tract 2.08	\$84,132	No
Block Group 1 (AZ Farm/Felix Rd Neighborhood)	\$81,603	No
Block Group 2 (Magma Ranch)	\$91,318	No
Census Tract 2.12	\$76,688	No
Block Group 1	\$55,944	No
Block Group 2*	\$109,514	No
Block Group 3	\$86,518	No
Census Tract 2.17	\$83,714	No
Block Group 1 (Judy's Rd)	\$95,017	No
Block Group 2*	\$82,625	No
Census Tract 3.09	\$42,989	No
Block Group 1*	\$41,907	No
Block Group 2	\$47,938	No
Census Tract 3.10	\$49,875	No

Block Group 1	\$36,750	No
Block Group 2	\$61,125	No
Census Tract 3.11	\$88,603	No
Block Group 1*	\$73,966	No
Block Group 2	\$89,547	No
Census Tract 3.12	\$61,414	No
Block Group 1	\$58,555	No
Block Group 2	\$71,912	No
Block Group 3	\$61,583	No
Census Tract 3.13	\$69,342	No
Block Group 1	\$55,688	No
Block Group 2	\$116,250	No
Block Group 3	\$69,120	No
Census Tract 3.15	\$70,263	No
Block Group 1*	\$57,393	No
Block Group 2	\$90,632	No
Block Group 3	\$68,965	No
Census Tract 3.16	\$117,261	No
Block Group 1 (AJ Mountainview Rd)	\$135,625	No
Block Group 2	\$120,333	No
Block Group 3	\$94,375	No
Block Group 4	\$134,271	No
Census Tract 3.17	\$52,083	No
Block Group 1	\$35,245	No
Block Group 2	\$59,663	No
Census Tract 3.19	\$66,250	No
Block Group 1 (Dolce Vita)	\$66,250	No
Census Tract 3.20	\$37,554	No
Block Group 1*	\$32,361	No
Block Group 2	\$40,446	No
Census Tract 3.22	\$65,884	No
Block Group 1	\$65,253	No
Block Group 2	\$67,574	No
Census Tract 3.23	\$65,179	No
Block Group 1	\$76,125	No
Block Group 2	\$63,681	No
Census Tract 3.24	\$75,000	No
Block Group 1	\$95,667	No
Block Group 2 (US60-Baseline, Goldfield-Cortez)	\$30,705	Yes
Block Group 3	\$83,500	No

Census Tract 3.25	\$59,464	No
Block Group 1	\$56,010	No
Block Group 2	\$67,687	No
Census Tract 8.04	\$39,174	No
Block Group 1* (south of Hunt Hwy)	\$19,276	Yes
Block Group 2	\$40,481	No
Census Tract 8.05	\$87,688	No
Block Group 1	\$83,667	No
Block Group 2	\$92,663	No
Block Group 3	\$100,063	No
Census Tract 8.06	\$100,259	No
Block Group 1	\$93,843	No
Block Group 2*	\$120,628	No
Census Tract 4226.52	\$75,710	No
Block Group 1	\$76,824	No
Block Group 2	\$65,673	No
Census Tract 4226.53	\$76,667	No
Block Group 1	\$70,750	No
Block Group 2	\$78,824	No

Disability

The study area report shows 17,525 individuals with a disability, or 18.68% percent of the population in the study area, which is slightly higher than the county average of 15.88% percent (based on ACS 2021 Five Year Census data). Within this area there are limited to no facilities or organizations focused on individuals with disabilities.

Additional Characteristics

Internet Availability by Household

Throughout the study area, 11.9% of households do not have access to the internet which is nearly 1% higher than the county average of 10.86%.

Female Households

The study area includes a total of 39,472 households, with 4.6% of heads of households being female. This is lower than the county average which is 7.19%.

Public Involvement Plan During the Study Phase

An effective public involvement (PI) process that engages stakeholders is pivotal to the development and refinement of transportation solutions. The thoughts, concerns, and ideas of the public on study area transportation needs, challenges, and opportunities are critical to establishing solutions that are practical

in meeting transportation needs. Involving the public early in the process reduces the chance of study delays by identifying, addressing, and resolving issues of concern.

Public Involvement Tools and Tactics

Purpose

Based on the community data above and previous study public involvement efforts, we have identified the tools and tactics listed below to best inform and collaborate with the impacted communities.

The team will use a mix of both digital and traditional communication methods to best reach the diverse and wide-spread rural communities. We anticipate offering multiple public meeting opportunities, both in-person and virtual, in convenient locations to reach the condensed areas of the public at the northern and southern end of the study area. In addition, there are several HOAs in or near the study area that have been historically active in this study and may require additional grassroots efforts such as canvassing or presentations at their regularly scheduled meetings. As communities are widespread throughout the corridor, access to digital tools during this study will be critical to allow those who cannot attend in-person opportunities to learn more, engage with the study, and provide feedback.

PI aims to involve the largest possible segment of the population, yet traditional methods such as meetings and hearings might be attended by only a small group of people compared to the number who are interested or impacted. As mentioned above, the team will work with ADOT Community Relations (CR) to identify what non-traditional outreach methods may work best to maximize public engagement. Other methods that the consultant PI team might utilize may include:

- Distributing information to stakeholders (tribal nations and state and local agencies) about the study or upcoming opportunities for public involvement at recreational sites along the Segment 1 Study area.
- Setting up a booth at community fairs or events to increase exposure for a study plan and distribute fliers or other information.
- Sharing posters or study information at chambers of commerce, shopping centers, community centers or other common community gathering places.
- Coordinating with tribal nations about local gathering places and other locations where other community information is regularly shared.
- Providing information at other local government or community meetings.
- Distributing bilingual mailers to targeted communities within and near the corridor route.

Any additional public involvement efforts made as a result of feedback received from the public will be documented and updated in this PIP. The team will seek to identify and address barriers to public participation in the transportation planning process and to better understand community-specific issues.

Details of current anticipated outreach efforts are described in the sections below.

Public Meetings and Hearings

A series of formal public meetings or hearings have occurred or are planned to provide information about the study and seek public comment during following study phases:

- **Early Scoping** - The team held two in-person and one virtual meeting in September 2023 during the initial public scoping study phase. These meetings provided information about the study and refined purpose and need from Tier 1, study process and timeline.
- **Notice of Intent and Preliminary Alternatives** - The team anticipates hosting two in-person and one virtual public meeting upon publication of the Notice of Intent to solicit comments on the study purpose and need, and the preliminary range of alternatives to be considered in the EIS.
- **Draft EIS and DCR (hearings)** - The team anticipates hosting two in-person and one virtual public hearing to present the Draft EIS and Initial DCR documents and provide an opportunity for formal public comments through a public hearing process.

Before scheduling the public meetings, the team will work to define objectives and determine the specific purpose of conducting each series of meetings. Study team meetings will be held to determine what information should be communicated to the public and what information should be collected. Collaboration with the study team will be conducted to determine the study goals and desired outcome of the meeting. A public meeting checklist will be used to help plan and organize the public meetings.

In-Person Public Meetings

The in-person meetings will be held at two separate locations along the corridor in areas that are close to the more centralized populations and are accessible by public transit. We anticipate these meetings will be held at Poston Butte High School and Apache Junction Multigenerational Facility.

The in-person public meetings will be set up to allow the meeting attendees to review study information through display boards, roll plots, and/or a web-based comment map before and after a presentation by the study team. The in-person public meetings will allow the public to provide comments and ask questions using the comment methods discussed in Public Meeting and Hearing Notifications. Spanish language materials and interpretation will be provided at the meetings.

Virtual Public Meetings

In-person meetings will be complemented by virtual public meetings and will present the same information as the in-person meetings. These meetings will be conducted through the Zoom platform and will offer both online and call-in options, as well as a Spanish audio channel. The virtual meetings will include a meeting presentation, followed by a live question and comment session.

Meeting Planning and Logistics

The team will develop the meeting plans, secure all vendors, manage logistics (facility and virtual platform coordination), develop content and graphics for all notifications and materials, and coordinate the translation of notifications and materials. The team will work closely with ADOT CR, Civil Rights, and Environmental Planning to develop and refine content and messaging for notifications and materials.

The team will develop a series of notifications that will include meeting dates and times, virtual login information, comment options, study overview and schedule, Title VI language, NEPA assignment language, and a study area map. Other details may be included based on the notification and phase of the study. Details on these notifications can be found in the section below.

Public Hearings

The purpose of the public hearings is to share the preferred alternative, allow the public the opportunity to review the Draft EIS and Initial DCR, provide information about the study process, purpose, and need, and provide an opportunity for formal public comments. Before scheduling the public hearings, the team will work to define objectives and determine what information should be communicated to the public. A public hearing checklist will be used to help plan and organize the public hearings. The team anticipates hosting two in-person and one virtual hearing following the release of the draft environmental study.

In-Person Public Hearings

The in-person hearings will be held at two separate locations along the corridor in areas that are close to the more centralized populations and are accessible by public transit. We anticipate these hearings will be held at Poston Butte High School and Apache Junction Multigenerational Facility.

The public hearings will be set up to allow the meeting attendees to review the Draft EIS and Initial DCR, and study information through display boards, roll plots, and a web-based comment map prior to and after a formal presentation by the study team. The public hearings will allow the public and stakeholders to provide comments and ask questions through numerous comment methods which are listed in sections below. Spanish interpretation will be provided at the hearings.

Virtual Public Hearing

In addition to the in-person hearings, a virtual hearing will also be held following the release of the Draft EIS and Initial DCR and will present the same information as the in-person hearings. This hearing will be conducted through the Zoom platform and will offer both online and call-in options, as well as a Spanish audio channel. The virtual hearing will include a formal presentation, a live question session, and a formal public comment session.

Hearing Planning and Logistics

The study team will develop the meeting plans, secure all vendors, coordinate repository locations, repository document delivery and pick-up, manage logistics (facility and virtual platform coordination), develop content and graphics for all notifications and materials, and coordinate the translation of notifications and materials. The study team will print materials and exhibits and print and mail hearing notifications and advertisements for the public hearings. The study team will work closely with ADOT CR, Civil Rights, and Environmental Planning to develop and refine content and messaging for notifications and materials.

The team will develop a series of notifications for the public hearings that will include hearing dates and times, virtual login information, comment options, repository locations, study overview and schedule, Title VI language, NEPA assignment language and a study area map. Other details may be included based on the notification and phase of the study. Details on these notifications can be found in the section below.

Public Meeting and Hearing Notifications

The study team will work with ADOT CR to communicate information regarding the public meetings and hearings through the ADOT study website, email blasts, mailers, social media, press releases and newspaper advertisements. All notifications will be distributed in English and Spanish, and may include the following content:

- Description of the proposed project and level of environmental action being conducted
- Location map
- The purpose of the public hearing and meeting
- Explanation of the format for the public hearing and meeting
- Date, time, and location of the public hearing and meeting
- Login details for the virtual meeting and hearing
- Map of venue and immediate surrounding area with north directional arrow (included on study map)
- List of locations and other sources (such as websites) where materials are available for public review
- Comment methods and comment due date: List study hotline, email address, mailing address, online comment info
- List study online meeting and hearing website address
- Include ADOT project number and federal ID number
- Title VI language, English and Spanish
- NEPA Assignment Language, English and Spanish

All public meetings will provide multiple methods for providing comments. These include the following and will be available in both English and Spanish:

- Online meeting tool (comment form and/or survey): www.northsouth-segment1.com
- Online interactive comment map
- Comment forms (print)
- Email: info@northsouth-segment1.com
- Phone: 602-474-3990
- Mail: ADOT North-South Segment 1
c/o HDR Engineering, Inc.
20 E Thomas Road, Ste. 2500
Phoenix, AZ 85012

All comment methods will be weighed equally. Comments and questions will be documented in the final public meeting summaries.

The study team will arrange to have interpreters at the public meetings to provide Spanish translation services to members of the community who would benefit from such services. In addition, meeting notices and critical study materials will be translated into Spanish including the public meeting mailers, ads, fact sheets and handouts, online meeting tool (through translation widget), and meeting presentations and scripts. Additional language translations will be provided, as requested. Requests for accommodation will be considered and required by Executive Order 13166 for LEP, and Title VI of the Civil Rights Act of 1964.

Those who may have difficulty participating in the virtual or in-person meetings may request reasonable accommodations by contacting the assigned CR team member whose contact information will be provided in meeting notifications and on the study website. Accommodations may include mailing printed public meeting materials in alternative languages to stakeholders, mailing or providing a thumb-drive with public meeting documents, or offering a location for stakeholders to view study documents.

Public meeting notification, participation, and public comments and responses will be documented in a public meeting summary for the study file.

Newspaper

Notification of the public meetings and hearings will be provided by placing advertisements in the Tri-Valley Dispatch, Arizona Republic (Zones 6 and 11), Gila River Indian News, and La Voz (TVyMas), which are four local news publications that serve the study area. The advertisements will be published at least 15 business days, but no more than 30 business days, before the meeting and hearing. At least one advertisement will be translated and published in Spanish (La Voz).

Direct Mailer

Notification of the public meetings and hearings will also be distributed through Every Door Direct Mail (EDDM) to all residential and business postal customers within two miles of the study area in both English and Spanish (approximately 37,500 mailers). A direct mailer will also be sent to every property owner within the 1,500-foot alternative with a mailing address outside of the study area. Mailers will be scheduled to arrive in mailboxes at least seven (7) business days, but no more than 30 business days, before the meeting and hearing.

GovDelivery and News Release

The study team will develop email blast content and news release content to be distributed by ADOT through their GovDelivery system. Email blasts will be sent to all of those who have signed up to receive updates for this study as well as anyone who signed up to receive updates on the previous study phase. ADOT will distribute both notifications at least 15 days prior to the meetings and hearings and will send out reminder email blasts during the public comment periods. ADOT will serve as the media contact and spokesperson for the study and shall respond to all media inquiries. The study team will not speak to the media without prior permission from ADOT.

Social Media

A social media strategy will be developed to advertise events, share relevant media, and inform stakeholders about the study, public meetings and hearings, and ways to provide input. The study team will develop social media communications with the public for ADOT to post on its social media platforms. ADOT social media platforms will be used to provide information about the study, provide notice of the public meetings and hearings and opportunities to comment. Suggested social media content will be provided to Pinal County, surrounding cities and towns, Chamber, schools, tribal nations, and others who can assist in sharing social media posts. The following ADOT social media mediums will be used:

- Nextdoor
- X (x.com/ArizonaDOT)
- Facebook (facebook.com/AZDOT)

ADOT's Digital Communications team serves as the lead for all social media engagement. If questions or comments about the Segment 1 Study are received via ADOT-managed social media platforms, ADOT will direct the person(s) who submitted them to the official study email address and telephone line for the opportunity to provide formal comments for the study record.

ADOT Study Website

The ADOT study website will provide up-to-date study information including study materials and documents (Draft EIS, Final EIS, Initial and Final DCR documents, etc.), study area maps, public meetings and hearing presentations, meeting and hearing summaries, other informational materials, and contact information for the entire 55-mile North-South Corridor for Segments 1 and 2. HDR will work with ADOT to provide the files and content for web posting. The ADOT study website will think to both online meeting

website for the Segment 1 and Segment 2 Studies. The study website address is: <https://azdot.gov/planning/transportation-studies/north-south-corridor-study-proposed-new-transportation-route-pinal>.

Online Meeting and Hearing Website

The study team created an interactive, user-friendly, and accessible online website specifically to share public meeting and hearing information, educate stakeholders and communities, provide community engagement opportunities, and integrate with other digital communication channels and media as needed. This website will support public meetings and hearings. All content developed for the printed materials and graphics (presentations, display boards, handouts) will be repurposed for the online meeting and hearing website.

The meeting and hearing website will be updated as the study progresses and will include contact information, public meeting and hearing information, and other resources, including materials and documents related the Segment 1 Study.

Community Groups Coordination and Pop-up Events

As mentioned above, there are several communities in or near the corridor, such as Apache Junction, Queen Creek, and San Tan Valley that may require additional engagement through efforts such as pop-up events or booths at planned community events. In addition to these events, the study team may be able to reach these communities through existing community groups such as HOAs or neighborhood associations. The study team will coordinate with the agency partners in these areas to help identify these groups and expand our stakeholders. ADOT and the study team will work to identify opportunities for additional grassroots efforts to these groups and communities through canvassing, pop-up events, or presentations at their regularly scheduled meetings.

Handouts

A handout and/or brochure (in English and Spanish) will be created to include the study overview, map, study elements and environmental process, schedule, contact information, and how to provide comments during the current study phase. These handouts and brochures will be printed and distributed at the public meetings and hearings or other grassroots events. It will also be made available on ADOT's study webpage as well as the online meeting website.

Stakeholder Database

The study team will establish an electronic database with contact information and ongoing communications for key stakeholders and the public who interact with the study. The database will be built using the existing contact list from previous study phases and any additions supplied by ADOT CR or

agency partners. These contacts were secured in August 2023. The database will be monitored and updated throughout the life of the study and will track public comments received.

Stakeholder and Public Inquiry and Comment Log

Inquiries will be tracked and classified according to subject and will be tracked in an Excel database, as well as an online stakeholder database (mentioned above). The study team will respond to routine inquiries. More complicated questions or comments will be shared with the full team for assistance drafting a response. The response will be shared promptly with the stakeholder or member of the public.

Title VI and ADA Outreach

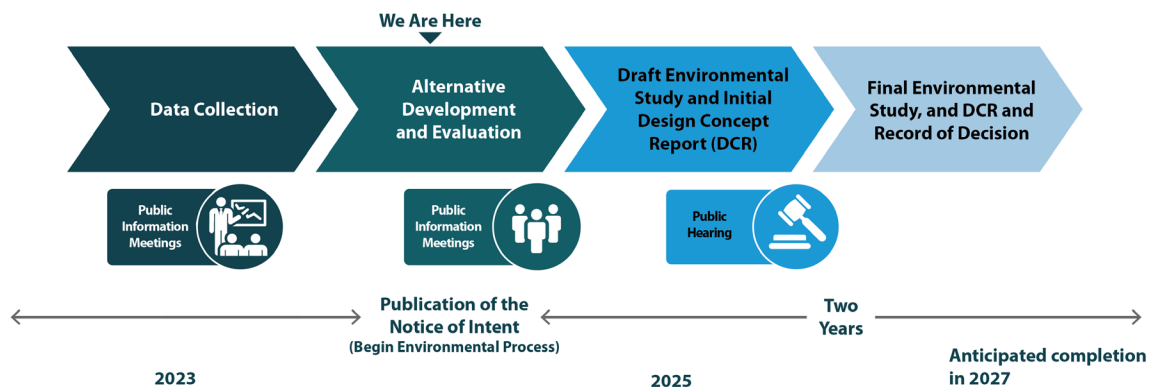
The following will be used to ensure all interested and affected members of the public have an opportunity to learn about and provide input on the study:

- Ensure that information and outreach tools, including public meetings and hearings, surveys, and notices, are accessible for persons with vision, hearing or other disabilities. In addition to providing ADA accommodations upon request, the following will be provided: study materials in digital and accessible formats; posting study materials including the presentation in PDF and video format on the website and alt text for graphics, maps, and photos; using simple and clear visuals, providing a call-in option at the public meeting and hearing for those without Internet access, closed captioning (with instructions provided) and having speakers leave their cameras on when presenting and speaking.
- All critical materials will be translated into Spanish. A separate phone line for Spanish speakers will be provided for the virtual public meetings and hearings and a Spanish interpreter will provide simultaneous interpretation of the meeting. If the meeting platform allows, a Spanish-language channel can be provided.
- A separate Spanish phone line will be provided for Spanish speakers to provide comments and ask questions.
- Accommodations for materials and interpretation in other LEP languages and ADA accommodations will be provided upon request.
- The public meeting and hearing notices will be mailed to all households and businesses within two miles of the study area.
- The public will have an opportunity to provide comments via multiple methods, including by mail, phone, email, and online.
- ADOT's Notice of Reasonable Accommodations will be included on all digital or printed material created for public dissemination, which includes information on how to request reasonable accommodations.

Study and Public Involvement Timeline

The initial phase of this study were the early scoping meetings, data collection and preliminary environmental work and included initial agency and stakeholder coordination and public information meetings. Following with the public and agency publication of the NOI, there will be outreach activities to gather input on the preliminary range of alternatives, preliminary purpose and need, existing environmental conditions and potential impacts, and the identification of any relevant information, studies or analyses concerning impacts affecting the quality of the human environment for consideration in developing the Tier 2 Draft EIS. These activities will include agency and stakeholder meetings, as well as a series of public information meetings. ADOT will refine the preliminary alternatives, purpose and need, and consider other information collected as part of the NOI comment period in preparing the Draft EIS. The next milestone will be the publication of the Draft EIS and Initial DCR. ADOT will conduct a formal public comment period and hold public hearing(s) to receive public comments on the Draft EIS and Initial DCR documents. It is anticipated the Draft EIS will present a Preferred Alternative for agency, Tribal governments or nations, stakeholder, and public review. The final step in the study will be to prepare a Final EIS, which will identify a Selected Alternative and include a response to agency, Tribal, stakeholder, and public comments on the Draft EIS. It is anticipated this study will publish a combined Final EIS and Record of Decision. Upon publication of the NOI, this study will take approximately two years to complete (see Figure 2).

Figure 2: Anticipated Study Process



*Schedule is anticipated to change

Study Milestones

Milestones	Dates
<ul style="list-style-type: none"> • Draft PIP • Update existing study website • Set up stakeholder management system, email, and hotline 	April 2023 (Complete)
<ul style="list-style-type: none"> • Initial concept development 	May 2023 – January 2024 (Complete)
<ul style="list-style-type: none"> • Finalize PIP • Refresh study branding • Begin initial grassroots outreach (small group presentations to and meetings with key stakeholders) 	April-August 2023 (Complete)
<ul style="list-style-type: none"> • Planning for initial public meeting begins • Develop public meeting plan 	April- August 2023 (Complete)
<ul style="list-style-type: none"> • Organize logistics for agency and public meetings • Develop agency and public meeting notifications • Develop meeting materials • Develop online meeting website 	June-August 2023 (Complete)
<ul style="list-style-type: none"> • Begin meeting notification and distribution • Finalize meeting logistics • Finalize meeting materials 	June-August 2023 (Complete)
<ul style="list-style-type: none"> • Hold staff briefing and virtual dry runs 	August 2023 (Complete)
<ul style="list-style-type: none"> • Finalize online meeting tool • Open public comment period • Agency and stakeholder meetings • First early public scoping meeting (in person) • Second early public scoping meeting (in person) 	August- September 2023 (Complete)
<ul style="list-style-type: none"> • Third virtual public early scoping meeting 	September 2023 (Complete)
<ul style="list-style-type: none"> • Public comment period closes • Track all comments in stakeholder management software 	September 2023 (Complete)

Milestones	Dates
<ul style="list-style-type: none"> Title VI meeting report sent to Civil Rights Office 	October 2023 (Complete)
<ul style="list-style-type: none"> Public Meeting Summary finalized and posted to website and emailed to attendees 	October 2023 (Complete)
<ul style="list-style-type: none"> Develop preliminary range alternatives and preliminary purpose and need for NOI 	January 2025 – April 2025
<ul style="list-style-type: none"> Planning for NOI public meeting begins Develop NOI public meeting plan 	January 2025
<ul style="list-style-type: none"> Organize logistics for NOI public meetings and agency briefings Develop NOI public meeting notifications Develop NOI meeting materials Review and update online meeting website 	January - April 2025
<ul style="list-style-type: none"> Publish NOI 	April 2025
<ul style="list-style-type: none"> Begin NOIs meeting notification and distribution Finalize NOI meeting logistics Finalize NOI meeting materials 	January - April 2025
<ul style="list-style-type: none"> Finalize online meeting tool Open public comment period Agency and stakeholder meetings First NOI public meeting (in person) 	April- May 2025
<ul style="list-style-type: none"> Second NOI public meeting (in person) 	May 2025
<ul style="list-style-type: none"> Third virtual NOI public meeting 	May 2025
<ul style="list-style-type: none"> NOI public comment period closes 	June 2025
<ul style="list-style-type: none"> Title VI meeting report send to Civil Rights Office 	June 2025
<ul style="list-style-type: none"> Public Meeting Summary finalized and posted to website Emailed to attendees 	July 2025
<ul style="list-style-type: none"> Review and consider NOI agency, Tribal, stakeholder, and public comments 	Summer 2025

Milestones	Dates
<ul style="list-style-type: none"> Refine preliminary alternatives for evaluation in Draft EIS 	
<ul style="list-style-type: none"> Environmental impact technical studies Develop Draft EIS and Initial DCR documents 	August 2025 – summer 2026
<ul style="list-style-type: none"> Begin public hearing planning Develop public hearing plan Hold agency and stakeholder briefings 	Spring 2026
<ul style="list-style-type: none"> Organize logistics for public hearings Develop public hearing notifications Develop public hearing materials Review and update online meeting website 	Spring 2026
<ul style="list-style-type: none"> Prepare Draft Environmental Study and Initial DCR for publication Hold agency and stakeholder briefings 	Spring 2026
<ul style="list-style-type: none"> Publish Notice of Availability and distribute Draft EIS and Initial DCR Open public comment period Begin public hearing notification and distribution Finalize public hearing logistics Finalize public hearing materials Finalize online meeting tool 	Summer 2026
<ul style="list-style-type: none"> First public hearing (in person) 	Summer 2026
<ul style="list-style-type: none"> Second public hearing (in person) 	Summer 2026
<ul style="list-style-type: none"> Third virtual public hearing 	Summer 2026
<ul style="list-style-type: none"> Public comment period closes 	Summer 2026
<ul style="list-style-type: none"> Title VI meeting report sent to Civil Rights Office 	Fall 2026
<ul style="list-style-type: none"> Public Hearing Summary finalized 	Fall 2026
<ul style="list-style-type: none"> Begin preparation of Final Environmental Study and DCR documents 	Fall 2026

Milestones	Dates
<ul style="list-style-type: none"> Review and respond to all public comments 	
<ul style="list-style-type: none"> Finalize Environmental Study and ROD and DCR Publish Notice of Availability and distribute Provide public notification of ROD 	Spring 2027

Public Involvement Measures of Success

The public involvement and outreach goal is to achieve a high level of public engagement during the study phase. The following measures will be used to determine whether the public involvement was successful:

- Number of people who subscribe to receive study updates, target goal is at least 2% of the study area population: approximately 1,160 people
- Number of people who attend the combined in-person public meetings. Target goal: 120
- Number of attendees for the virtual public meetings. Target goal: 120
- Number of comments received for each study phase. Target goal: 75
- Public meeting participants will be surveyed to measure their satisfaction with the meeting information and notification (using a scale of 1-5 with 5 being the “most satisfied.”) Target goal: 3 or higher

Responsibilities Matrix

Task / Activity		Consultant PM (AECOM)	Consultant Comms (HDR)	ADOT PM	ADOT Comm Rel PM	Environmental	Cooperating Agencies	Civil Rights Office
I			Team Meetings					
	Study team meetings	Lead	Participate	Participate	Participate	Participate	Participate	Participate if desired
	Public Involvement Coordination Meetings	Participate	Lead	Participate	Participate	Participate	Participate if desired	Participate if desired
II			Public Involvement Plan					
	Prepare PIP and LEP analysis	Participate	Lead	Review	Participate/Review	Review	N/A	Review
III			Agency/Stakeholder Outreach					
	Create study database of agency/stakeholder contacts	Lead	Participate	Participate	Participate	Participate	Provide Contacts	N/A
	Agency/Stakeholder notices	Lead	Participate/Review	Participate/Review	Participate/Review	Participate/Review	N/A	N/A
	Agency/Stakeholder briefings/presentations	Lead	Participate/Attend	Participate/Attend	Participate/Attend	Participate/Attend	Attend	N/A

Task / Activity		Consultant PM (AECOM)	Consultant Comms (HDR)	ADOT PM	ADOT Comm Rel PM	Environmental	Cooperating Agencies	Civil Rights Office
	Agency comment/ inquiry log	Prepare/Review Responses	Lead	Prepare/Review Responses	Prepare/Review Responses	Prepare/Review Responses	Review if needed	N/A
III	Public & Key Stakeholder Outreach							
	Create study database of community contacts	N/A	Participate	N/A	Lead	N/A	Provide Contacts	N/A
	GovDelivery Alerts	Review	Prepare content	Review	Send	Review	Provide copy for use	N/A
	HOA and community organization outreach/ presentations	Review/Attend	Participate	Review/Attend	Lead	Review/Attend	Participate if desired	N/A
	Public comment/ inquiry log	Prepare/Review Responses	Lead	Prepare/Review Responses	Participate/Review	Participate/Review	Review if needed	N/A
	Provide accommodations at public request	N/A	N/A	N/A	Lead	N/A	N/A	Advise
IV	Public Meetings/Hearings							

Task / Activity		Consultant PM (AECOM)	Consultant Comms (HDR)	ADOT PM	ADOT Comm Rel PM	Environmental	Cooperating Agencies	Civil Rights Office
	Identify virtual or in-person meeting date/time/platform/location	Participate/ Approve	Lead	Participate/ Approve	Participate	Participate	Participate	Participate
	Meeting presentation	Lead/ Review	Participate/Review	Participate/ Review	Participate/Review	Participate/Review	N/A	Review
	FAQs/messaging	Participate / Approve	Lead	Participate / Approve	Participate/Review	Participate/Review	Review	Review
	Develop meeting notices and materials	Review	Lead	Review/ Approve	Review	Review	N/A	Review
	Distribute meeting notices	N/A	Lead (mailed notices & ads)	Review	Lead (email and social media)	N/A	Send notices via city channels	N/A
	Print Draft Environmental Study and FEIS, ID Repository Locations and Distribute	Print	Distribute	N/A	N/A	N/A	N/A	N/A
V			Graphics, Web Design & Production					

Task / Activity	Consultant PM (AECOM)	Consultant Comms (HDR)	ADOT PM	ADOT Comm Rel PM	Environmental	Cooperating Agencies	Civil Rights Office	
ADOT Study website content	Review	Review	Review	Lead	Review	N/A	Review	
Electronic copies of Draft Environmental Study, FEIS, and other study documents	Provide	Review	Review	Post to website	Review	N/A	N/A	
Online meeting website	Review/Participate	Lead	Review	Review	Review	N/A	Review	
Design graphics: photosims, cross-sections	Lead	Review	Review/approve	Review	Review	Review	Review	
Social media content/monitoring	Review	Lead/Provide to ADOT	Review	Review/Provide to Digital Comms	Review	N/A	Review	
Online Comment Form/Tools	Review	Lead	Review/ Approve	Review	Review	N/A	Review	
Self-ID form	N/A	N/A	N/A	Lead	N/A	N/A	Review	
VI		Public Outreach Summary Report						
Prepare outreach summary document	Review	Lead	Review	Review	Review	Review	Review	

Public Involvement Plan

North-South Segment 1 EIS/DCR

Task / Activity	Consultant PM (AECOM)	Consultant Comms (HDR)	ADOT PM	ADOT Comm Rel PM	Environmental	Cooperating Agencies	Civil Rights Office
Title VI public meeting report	N/A	N/A	N/A	Lead	N/A	N/A	Review

Key

Lead: Prepares document/information for review and input from the study team.

Participate: Has direct participation in activities and assists with the preparation of documents/information for review and input from the study team.

Review: Reviews information for technical accuracy, readability, grammar, punctuation, etc.

Approve: Approves final documents/information.

ADOT’S NONDISCRIMINATION NOTICE TO THE PUBLIC

The Arizona Department of Transportation (ADOT) hereby gives public notice that it is the Agency’s policy to assure full compliance with Title VI of the Civil Rights Act of 1964, Title II of the Americans with Disabilities Act of 1990 (ADA), and other related authorities in all of its programs and activities. ADOT’s Title VI and ADA Programs require that no person shall, on the grounds of race, color, national origin, or disability, be excluded from participation in, be denied the benefits of, or be otherwise subjected to discrimination under any program or activity. Any person, who believes his/her Title VI or ADA rights have been violated, may file a complaint. Any such complaint must be in writing and filed with the ADOT Civil Rights Office within one hundred eighty (180) days following the date of the alleged discriminatory occurrence. For additional information about ADOT’s Civil Rights programs and the procedures to file a complaint contact ADOT Civil Rights Office via the information listed below:

Danielle Valentine, Title VI Program Coordinator, dvalentine@azdot.gov
Civil Rights Office
206 S. 17th Avenue, Mail Drop 155-A Phoenix, AZ 85007
602.712.8946
civilrightsoffice@azdot.gov

AVISO PÚBLICO DE LA LEY DE NO-DISCRIMINACIÓN DE ADOT

El Departamento de Transporte del Estado de Arizona (ADOT) informa al público que esta agencia tiene como regla asegurar el cumplimiento total del Título VI de la Ley de los Derechos Civiles de 1964, del Título II de la Ley de ciudadanos Americanos con Discapacidades de 1990 (ADA) y otras normas relacionadas con todos sus programas y actividades. Los programas del Título VI y ADA de ADOT exigen que a ninguna persona se le excluya de participar, se le nieguen beneficios o de ninguna otra manera sea sujeta a discriminación en ningún programa o actividad de ADOT por motivo de raza, color, país de origen, o discapacidad. Cualquier persona que crea que se han violado sus derechos bajo el Título VI o el ADA, puede presentar una queja. Esta queja debe presentarse por escrito a la Oficina de Derechos Civiles de ADOT dentro de ciento ochenta (180) días a partir de la fecha en que se alega que ocurrió la discriminación. Para recibir más información sobre los programas de Derechos Civiles de ADOT y los procedimientos para presentar una queja, por favor póngase en contacto con la Oficina de Derechos Civiles de ADOT a través la información que aparece abajo:

Danielle Valentine, Title VI Program Coordinator, dvalentine@azdot.gov
La Oficina de Derechos Civiles de ADOT
206 S. 17th Avenue, Mail Drop 155-A Phoenix, AZ 85007
602.712.8946
civilrightsoffice@azdot.gov

NEPA Assignment Disclosure

The environmental review, consultation and other actions required by applicable Federal environmental laws for this project are being or have been carried out by ADOT pursuant to 23 USC 327 and a Memorandum of Understanding dated 06/25/24 and executed by FHWA and ADOT.

Las consultas, la revisión ambiental y otras acciones requeridas según las leyes ambientales federales correspondientes para este proyecto se están llevando a cabo o se han llevado a cabo por ADOT de acuerdo con 23 U.S.C 327 y un Memorandum de Acuerdo con fecha del 25 de junio de 2024 y se han realizado por FHWA y ADOT.

Appendix

LEP Four-Factor Analysis Worksheet

Community Analysis Data

LEP FOUR FACTOR ANALYSIS WORKSHEET

Project Name: North-South Segment 1, Tier 2 Environmental Impact Statement and Design
 Concept Report (DCR), US 60 to Arizona Farms Road (SR 505)

ADOT Project (Tracs) Number: F054201L

Date: 02/28/23

Factor 1: The number or proportion of LEP persons eligible to be served or likely to be impacted by the project, activity, or service.

A. Geographic Area Impacted:

1. Identify the boundaries of the study/project area: 1,500-foot corridor alignment that runs from US 60 in the north to Arizona Farms Road in the south, east of San Tan Valley, and just west of SR 79.
2. List possible alternative routes: N/A
3. Other: N/A

B. Languages Impacted:

1. Use the U.S. Census data tool.
 - a) To collect data from U.S. Census Data "C16001/B16001:" Language Spoken at Home by LEP persons 5 years old and over, use the [FHWA's U.S. Census Limited English Proficiency Data Collection Walkthrough](#).

Name and Date of Report	Number of Population (over age 5 who speak a language other than English) that Speak English "less than very well"	Percent of Population (over age 5 who speak a language other than English) that Speak English "less than very well"
US Census, 2021 ACS 5-Year Estimates Detailed Tables	2,365	4%

2. Prior Experiences: Have language needs been previously identified in the area?

Yes: No:

If yes, list languages identified: Spanish

Determine the language characteristics of an LEP population in a study/project area by collecting and reviewing available data from federal, state, and local government agencies, and community and faith-based organizations. Consider consulting with organizations that serve and work with LEP populations to get an accurate assessment of the existing and emerging LEP communities in the area.

3. Interviews: N/A

DATE	NAME	ORGANIZATION	LANGUAGE NEEDS IDENTIFIED or NONE

4. Local Material Reviewed:

MATERIALS	LANGUAGE IDENTIFIED
Town of Florence General Plan	Identifies continued growth of Hispanic populations that may include increased Spanish-speaking populations
Florence Unified School District event fliers	English and Spanish
Crossroads Church, Epic Christian Church, Gold Canyon Church event fliers	English
St. Michael the Archangel Catholic Parish website, forms, and event fliers	English and Spanish

Factor 2: The frequency with which LEP individuals come into contact with the project.

TIP: The more frequent contact you have with a particular LEP group, the more likely that language services in that particular language will be needed.

U.S. Census Data C16001/B16001 Languages Spoken by LEP status:

Language(s)	Number of LEP persons that speak this language	Percent of population over age 5 that speaks this language
Spanish	2,365	4%
French, Haitian, or Cajun	1	<1%
German or other West Germanic languages	16	<1%
Russian, Polish, or other Slavic languages	18	<1%
Other Indo-European language	55	<1%
Korean	23	<1%
Chinese	38	<1%
Tagalog	15	<1%
Other Asian and Pacific Island languages	50	<1%
Other and unspecified languages	4	<1%

How often are individuals of each language group encountered?

Considering the percentage of Spanish-speaking populations with limited ability to speak English (2,365; 4%), the likelihood that this population will be encountered frequently within the study area is moderate. In addition, based on past experience with the Tier 1 Study, we frequently came into contact with Spanish-speaking populations and made sure to develop all materials in English and Spanish to accommodate this LEP population. As this does meet the Safe Harbor Threshold (5% or 1,000 persons), we will provide this language translation and interpretation throughout the study.

However, all other identified LEP populations are less than 1% of the population and are not located directly in the existing 1500' alignment (or significant surrounding area) and therefore we would not encounter them and/or impact them significantly. We do not anticipate providing additional translation services unless an accommodation request is made.

Factor 3: The nature/importance of the study/project provided by ADOT to LEP person's lives.

TIP: The more important the study/project is, or the greater the possible impacts are to LEP individuals, the more likely language services are needed. For example, an LEP person's inability to use public transportation may adversely affect their ability to obtain health care and/or education services, or access to employment.

- a. Frequency of LEP groups interaction with project:
 - a. Traffic level within study area: As this is a new transportation facility, there is not significant traffic within the area, however once built this will provide a critical connection from I-10 through numerous rural communities and connecting to the east valley of the Phoenix area, bypassing metro Phoenix.
 - b. List the types of interactions and activities LEP persons have in the study area: As this study area is extremely rural with limited access in the identified alignment, current interactions are limited. This freeway would create a more direct route to the east valley and provide critical connections to larger hospitals, the Phoenix-Mesa Gateway Airport, and emergency services access.

- b. Define the impact project will have on surrounding communities (check, if yes):
 - Will construction impact mode of transportation?
 - Will it impact community property?
 - Will it impact hospitals, bus routes, airports, cemeteries, etc.?
 - Will it impact private residential or commercial properties?
 - Will it impact access to any services (medical, pharmacies, grocery stores, etc.)?

Factor 4: Resources available to ADOT and associated costs.

TIP: ADOT personnel should carefully explore the most cost-effective means of delivering accurate language services before limiting services due to resource concerns. The following practices may reduce resource and cost issues, where appropriate:

- Use of a Google Translate widget on ADOT web pages to translate content into various languages.
- Information sharing through industry groups.
- Telephonic and video conferencing interpretation services.
- Pooling resources and standardizing documents to reduce translation needs.
- Centralizing interpreter and translator services to achieve economies of scale.

Large entities and those entities serving a significant number or proportion of LEP persons should ensure their resource limitations are well-substantiated before using this factor as a reason to limit language assistance. Such recipients may find it useful to be able to articulate, through documentation or in some other reasonable manner, their process for determining that language services would be limited based on resources or costs. Before denying a request for language services due to a project’s financial constraints, be advised the total amount of federal financial aid to ADOT as an agency is considered and not only the federal financial aid of a specific project.

Contact the Civil Rights Office at 602.712.8946 or civilrightsoffice@azdot.gov before denying a language request.

- a. Resources available:
 - a. Oral translators: Spanish interpretation services will be provided at all public meetings
 - b. Web tools: translation widget will be installed in the online meeting tool
 - c. Standardized materials available: All critical materials will be developed in Spanish
 - d. Utilizing Title VI Language in English only documents: English and Spanish
 - e. Community Resources: N/A
-

RECOMMENDATIONS:

Based on the data contained on this LEP Four Factor Analysis Worksheet and the [ADOT LEP Plan](#), the following language(s) have been identified as in possible need of LEP services for this study:

- Spanish

Based on available resources, the following language services will be provided by (check all that apply):

- Oral Translators
 - Contracted
 - ADOT Bilingual Staff (verified able and available)
- Community Volunteers (verified competent and available)
- Web Tools
- Written Translation
 - Contracted
 - ADOT Bilingual Staff (verified able and available)
 - Community Volunteers (verified competent and available)

Title VI Language Only (no translation anticipated)

No individual will be denied participation in ADOT-sponsored activities due to their Limited English Proficiency.

Updated March 2025

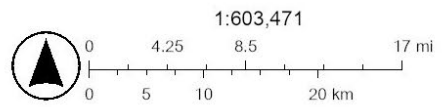
LIMITED ENGLISH PROFICIENCY FOUR FACTOR ANALYSIS

Demographic Analysis Area Map



3/2/2023

- CensusTracts Sites
- Polygon Areas
- CensusBlockGroups Sites
- Geography Areas
- North Segment
- 2 mile Alternative Buffer



Applicable Federal Regulations

This section describes the federal statutes and regulations for public involvement. Approaches to the degree of public involvement will vary with the complexity and impact of each study. The Arizona Department of Transportation (ADOT) will implement public involvement efforts in response to federal guidelines under Title VI of the Civil Rights Act of 1964, Limited English Proficiency (LEP) Executive Order 13166, the Americans with Disabilities Act (ADA) and the National Environmental Policy Act of 1969 (NEPA).

1. **Title VI of the 1964 Civil Rights Act (Title VI):** Title VI is a federal law that protects individuals and groups from discrimination on the basis of their race, color, and national origin in programs and activities that receive federal financial assistance.
2. **Limited English Proficiency (LEP):** Executive Order 13166 for Limited English Proficiency is a requirement of recipients of Federal financial assistance to provide language services (oral or written) to ensure meaningful access for all persons. Identification of LEP persons is informative for the purpose of devising appropriate strategies for meaningful public involvement and ensuring access pursuant to this Executive Order.
3. **Americans with Disabilities (ADA):** The Americans with Disabilities Act of 1990 (ADA) stipulates that people with disabilities be involved in developing and improving public services. In highway planning, collaboration with persons with disabilities is essential for developing access points beyond those that are required. All events held for programs or projects with federal-aid funds and open to the public must be made accessible to everyone, including persons with disabilities. Special efforts are required to comply with the statutory requirements of MAP-21 and the ADA.
4. **National Environmental Policy Act of 1969:** The NEPA process requires environmental analysis of proposed actions prior to making decisions, including constructing highways and other publicly owned facilities. Agencies must evaluate the environmental and related social and economic effects of their proposed actions and also provide opportunities for public review and comment on those evaluations. ADOT has assumed the Federal Highway Administration's responsibility for carrying out the National Environmental Policy Act environmental reviews and approvals per the executed agreement dated April 16, 2019, between the Federal Highway Administration and ADOT. As part of this study ADOT serves as the lead agency and has the authority to approve this study. ADOT Environmental Planning (EP) will work closely with ADOT Communications to provide for NEPA compliance for meaningful public involvement when assessing the environmental effects of the proposed actions.

PIP Updates:

- Updates to the PIP were made March 2025.